



OFFERING QUALITY POLY TANKS AT KEEN PRICING & ...WITHOUT COMPROMISE !

Care for any PROOF that MANY Traditional Slimline Tanks are & have been problematic over the Years ?

NOT ALL TANKS – PARTICULARLY SLIMLINE TANKS ARE CREATED EQUAL !

It's the majority of these Poly Slimline SINGLE PIECE Designs that rely on " Kiss-Off Joins " where significant Load and after many Cycles of Filling & Emptying – added with a Hot Day and expansion cause many of these style of Tanks to pull apart at this pruned weak point with massive loss of valuable water and sometimes severe property damage.

Our recommendation after suffering The Hard Way and Learning the Harsh Lessons is to **respectfully** advise YOU –

DO NOT RUN THE RISK PLEASE !

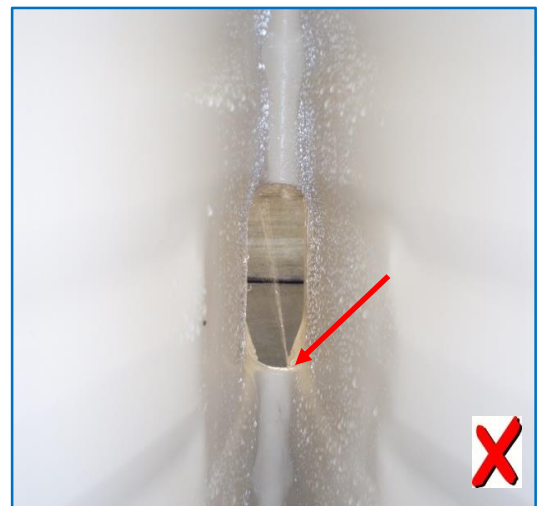
You can NOT beat the sheer Hoop Strength of a simple Circle – A Modular INDEPENDENT Barrel Tank System if you will with ZERO side seams - as we proudly offer in the main these days other than ONE SLIMLINE ONLY !

Following is PROOF that "Light Weight" Single Piece Clam Shell styled moulds making Slimline Tanks ARE & CAN BE Warranty Nightmares and YOUR pending loss as the Years Go By !

Folks, it truly all comes down to the DESIGN & whether or not the Tank meets minimum Build Quality & Material standards (such as AS/NZS 4766:2006) and most importantly that a Finite Element Analysis (F.E.A) has been conducted which will with the use of Computers & specific programs highlight the potential design flaws and / or weak point/s **that will be prone to failure.**

Another SIMPLE tell – tale screaming piece of advise is to ask the Tank Supplier or Manufacturere as to what "SHOT WEIGHT" is used to produce the Tank in mind or question ? In theory - the more raw material – poly powder that is placed inside the Mould before the lid goes on and then the Mould into the oven is a great guage that you are purchasing QUALITY – simply put the more material that goes in gives a stronger tank, thicker walled tank and stands to reason that the Tank will form up so much stronger in the specific areas where it counts ! This way you will receive Tank FIT for PURPOSE and not a Cheap Plastic Bag !

If you were to kindly consider the vast differences & to take the 2,000 Litre SLIMLINE Tank we PROUDLY OFFER – it IS more expensive by approx \$90-\$110 – **BUT the Tank is MADE using 30 KG more raw material** – poly resin powder shot into the mould to be sure and guarantee QUALITY – by the time this material is "cooked " & the Tank formed ready for Quality Control.



YES the or any Tank could be offered CHEAPER – BUT that would mean at least 30 Kg would need to come out of the Mould and then all is compromised. Its VERY easy to produce a CHEAP TANK– anyone can do that ! – but somebody is going to get hurt & more often than NOT it's you folks the consumer that get left holding the Cheap Bag !

We have NOT & care NOT to play that Game !

When the manufacturer has gone out of business (as is so very ofthen the case) there is NO warranty – and even then, should the manufacturere sell or go out of business and rebirth NO warranty will behonoured by the next entity – the NEW OWNER wont want the pending liability. So when you have to purchase a whole new Tank – Was your original "CHEAP TANK"purchase worth it now ?

We know of one manufacturere that thought he would beat the rest of the Industry – he came out offering a 30 Year Warranty – he didn't care as he wasn't interested in being around in 30 Years time & sure enough he last 6 Years and closed the doors leaving a trail of devistation – all while he went sailing around the South Pacific and flying his helicopter on their money !

Some Sydney manufactures offer a Warranty on a Tank they make for themselves in house – BUT that warranty is a different warranty as opposed to Tanks they make under contract out of other Moulds ! – **WHY ?... BUYER BEWARE PLEASE !**

Paying a Little More for a QUALITY TANK is NOT EXPENSIVE – ... It's actually PRICELESS !

Frankly – there is ONLY ONE 2000 Litre SLIMLINE we have faith in offering our Pending & Valued Customers for the Sydney, ACT, Newcastle, Central Coast and general populated East Coast of NSW market place that we are prepared to offer...and here it is below.

Sure, we know you can purchase a 2000 Litre Slimlne for as little as \$840 - \$870 plus delivery outside Sydney Metro and that IS NOT THE GAME we wish to play. Yepp a lesser grade 2000 Litre Slimline Tank will set you back at least circa \$920 bare minimum up to \$1125 into Newcastle, Central Coast, Wollongong, A.C.T & Souther NSW etc.

Please Folks – we understand and trust you may be so kind to consider in that "a Canoe and The Queen Mary are the same thing" - **they are** – they are BOTH Boats and that is where the comparison seriously stops. NOT all Tanks are equal and we will allow the photos here below & as follows to do the factual talking.

If you are insisting on "Cheap rather than Quality" we are sadly not able to serve you – we care NOT to offer you drama all for the sake of a sale and taking your hard earned cash to line our pockets. Here is hoping you care not for proven potential dramas with a pending failed Slimline Tank and even worse, a pending financial loss yourselves folks.

To simplyfy it more so – an Omelette can be made with either 3 eggs or 4 eggs – yet they look almost the same !

Now for peace of mind and a little more money to cover the costs of the 30 KG extra Raw Poly Resin Powder plus additional cost to manufacture QUALITY we proudly offer this 2000 Litre Slimline Tank for only \$1035 inc Free Delivery – we ask you for an average looking Slimline Tank by others that is 30 KG lighter in Raw Material and no way near offering the neat straight lines, corrugated look of Traditional Metal – Aquaplate® & Colorbond® Tanks is it really worth the supposed saving of circa \$100 ? We can help you save that cash back in a Quality Pump & Pump Cover deal at very least – so purchasing this 2,000 Litre Slimline casts a TRUE WIN-WIN SCENARIO with peace of mind and **NO COMPRIMISE with thanks in advance.**

This 2000 Litre Tank Offers the following Key Points & Benefits :

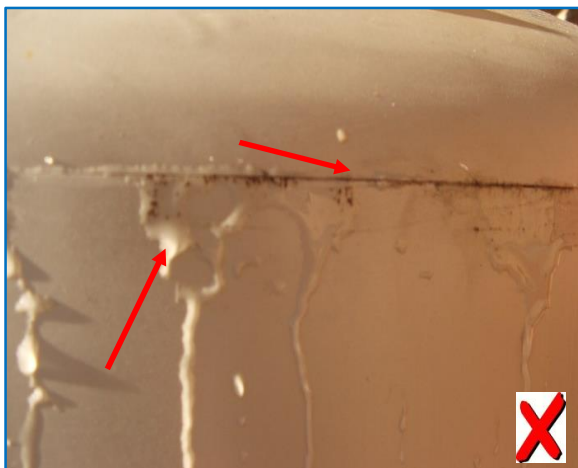
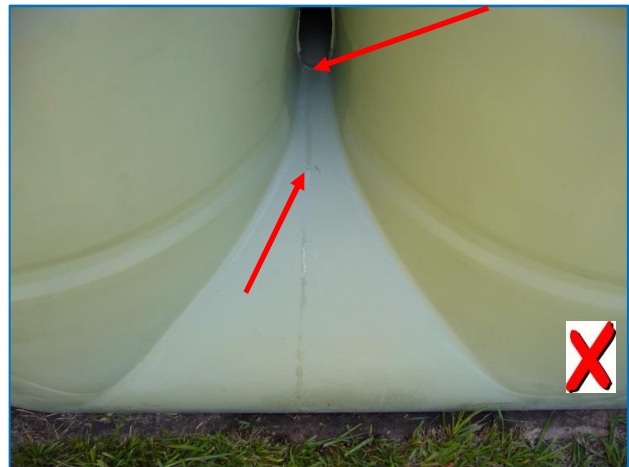
- A narrow **650 mm in Width** x 2400 mm in Length x 1800 mm in Height
- **Classic & attractive Corugated Steel Tank look to match any Home Décor**
- **Comes with a flat provision for mounting "a Bucket Height Tap" for extracting drinking water etc**
- **Available in over 24 Colorbond® Colours**
- **Unique moulded internals to prevent bulging or splitting**
- **Material used is to Australian Standard 4766**
- **Comes with 2 x 25 mm BSP outlets – thus symetrical**
- **Offered with moulded in Lifting Lugs.**
- **Weighs a MINIMUM of 110KG to form up correctly –**
- **ASK THE OTHERS WHAT THEIRS WEIGHS (80Kg is the answer)**
- **Great narrow foot print for sides of houses, garages etc.**
- **Caters to all aesthetics – Heritage, Classic & Modern Designs**



Now – getting back to “ Traditional Designed ” Slimline Tanks made using Clam-Shell Style Moulds designs with kiss-offs and side seams (verticle joins) coupled with using minimum raw material volume into the mould & light shot-weights of raw material inside the mould (being circa 80Kg) to make a “Cheap Tank ” is asking for trouble as proven many times before. Please - we will let just some of the many photos we have on file & as follows do the talking – *as they say a photo can be worth a thousand words !*

Interestingly, even a Tank wrapped in steel poles clearly means nothing either when the power of water Vs- poor manufacturing standards and poor design and cutting corners has its way.

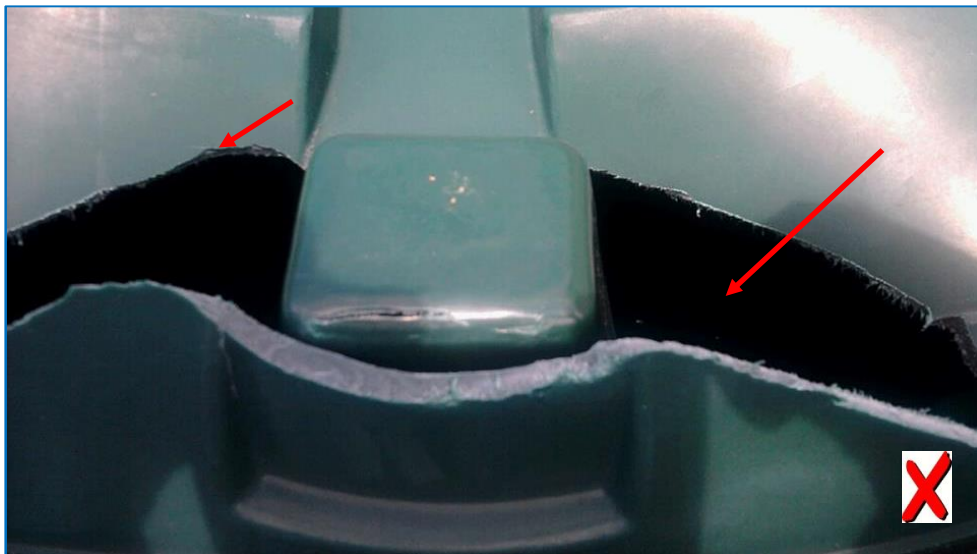
All these Tanks can NOT be repaired as the pressure from within can not be sealed and one can not get inside the Tank to weld it and shut of the hole or tear. The Sydney based manufacturer/s have “vanished” either back across the State Boarder from Queensland or in some cases they have vanished off the face of the earth or rebirthed shaking their Manufacturers Warranty obligations !





Now if that isn't enough – should “ OTHERS ” and certainly a Manufacturer try to tell you that Steel Poles are used to hold their Tanks together – that maybe so,.. BUT may we respectfully suggest and you Cry Out THAT'S BALONEY (B.S.) *sorry we meant to write ... you should say... NO ! – SORRY - THAT'S NOT TRUE !*

*Besides, if a Tank is worthy in Design - Why on earth do you need Steel Poles to hold them / it together ?
... You mean, - that's so they don't bow out & look like a Pregnant Cow and could eventually split open due to poor design ?*





These Tanks are only 2500 Litre in Size wrapped in Steel Poles and they still Hung themselves to Death !

NO WARRANTY IS AVAILABLE (*unless you know where to go looking !*) as the Company that manufactured them is "Hiding" behind a Company merger & Name Change yet is still making Tanks but have "Retired" this Design & Mould –

- **If you are looking for the Manufacturer by any chance give us a call ...**
... We have the Managing Directors personal e-mail address & phone number for you !



Remember please Folks - NOTHING is as STRONG as a Circle! - thus HOOP STRENGTH which is why ROUND BARRELL Tanks are extremely rare to fail as pressure is even all the way around the Circumference...so other than the 2,000 Litre Slimline we proudly offer PLEASE buy your Slimline – Slender Tank System in a form of joining Modular Independent Cylinders and you will NEVER have an issue with Splitting Tanks, Warranty Claims, perhaps property damage and even as it has for thousands of others significant financial loss ! –

DON'T RISK IT PLEASE ! *If saving that circa \$90 - \$100 is important let's talk about a Pump and Pump Cover Deal 2nd to none and claw back your additional outlay with that part of your proposed purchase – AGAIN WITHOUT COMPROMISE.*

WE SINCERELY THANK YOU FOR YOUR TIME AND DUE CONSIDERATION IN CHOSING
WE HERE AT DELUGE RAIN WATER TANKS TO SERVE YOU & YOUR NEEDS.